

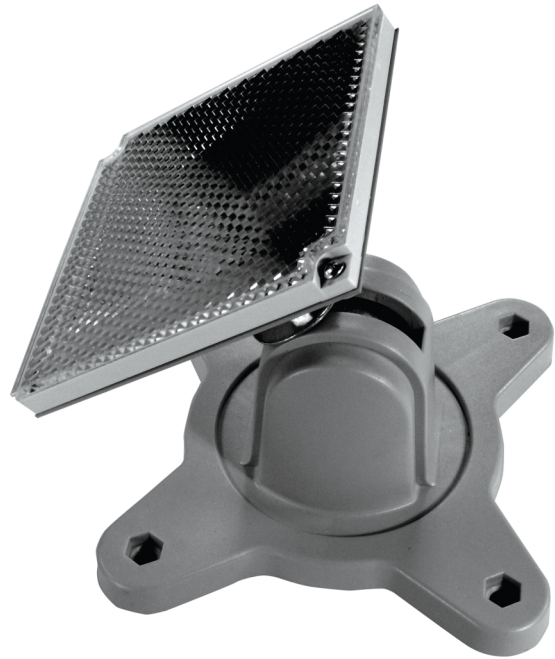
# FD-MB30

## Single Reflector Adaptor For Use With FD-MB20

### General

---

The FD-MB30 is used in conjunction with the FD-MB20 to mount a reflective prism at an off perpendicular axis. It allows for easy adjustment to ensure that the required angle between 0° and 45° can be achieved. It can be mounted vertically or horizontally.



### Details

---

- Easy adjustable
- 0° to 45° range

# FD-MB30

## Single Reflector Adaptor For Use With FD-MB20

### Technical specifications

---

#### Environmental

---

Environment	Indoor
-------------	--------

---

As a company of innovation, UTC Fire & Security reserves the right to change product specifications without notice. For the latest product specifications, visit UTC Fire & Security online or contact your sales representative.

2 May 2019 - 11:58



**United  
Technologies**

Climate | Controls | Security